



Ashperton Close, Southcrest, Redditch B98 7NG

Offers In Region Of £469,000

🛏 4 🚿 2 🚻 1

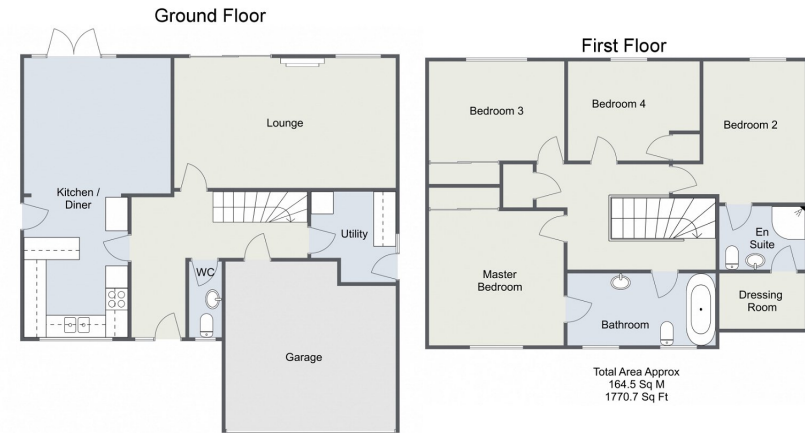


A beautifully presented and particularly well maintained four bedroom detached property offered with a modern and spacious kitchen/diner with separate utility, lounge, en-suite and dressing room to bedroom two, principal bathroom and guest WC, integral double garage with off road parking and delightfully maintained rear garden. Situated in the popular location of Southcrest, Redditch.





Ashperton Close, Redditch



For more information on this house or to arrange a viewing please call the office on:
01527 540 654

Alternatively, you can scan the QR to view all of the details of this property online.



arden
ESTATE AGENTS